

Emphasis Graphictures

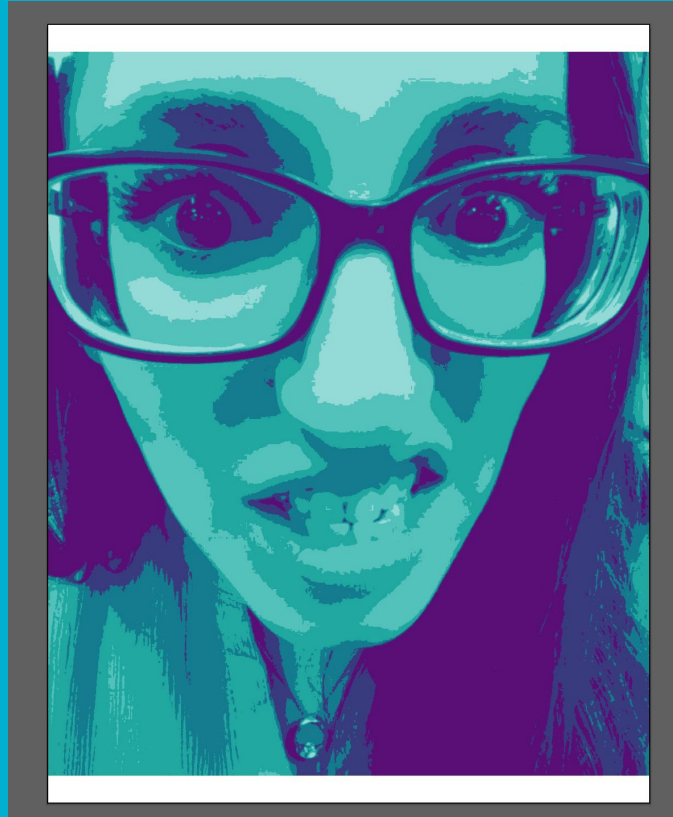
— Step – by –Step Tutorial

PART 2

FIMA with Mrs. Mendola

Step 1: Bring Your Portrait to Illustrator

- Open the saved portrait file in Illustrator
- Lock your Portrait Layer and Label it REFERENCE PHOTO

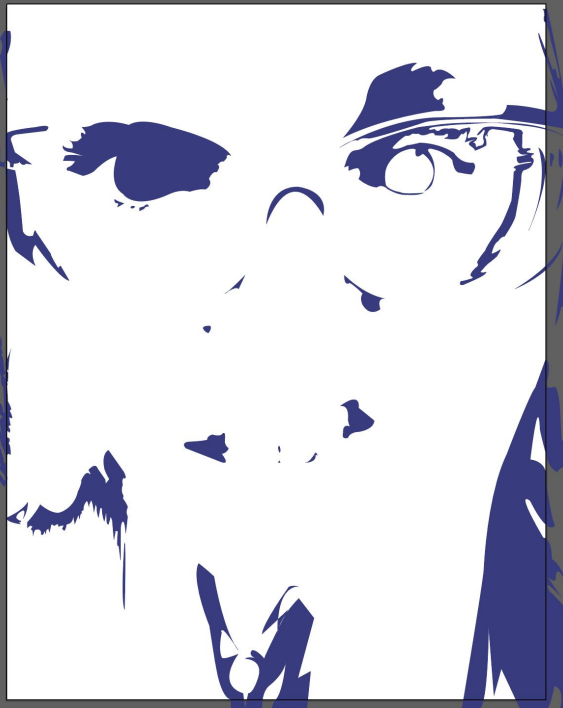


Step 2: Pen Tool

- Find your darkest color (mine is the dark purple)
 - The darkest color is your SHADOW layer
 - Label your new layer SHADOWS or whatever the color is (organization = key)
- Click on your Pen Tool
 - Be sure your FILL is turned OFF
 - Begin outlining the shapes that make up all your shadows
 - All shapes need to be closed so you can fill them with the appropriate color once completed
 - YOU DO NOT NEED TO OUTLINE EVERY SINGLE SHAPE!
 - LOOK CLOSELY TO SEE WHICH ARE THE MOST IMPORTANT SHAPES TO CREATE A SIMPLIFIED PORTRAIT
- When you finished, lock this layer
 - Make a new layer and label it accordingly
- Continue this process for a minimum of 3 different colors (shadows, midtones, and highlights)



SHADOWS



MIDTONES



HIGHLIGHTS

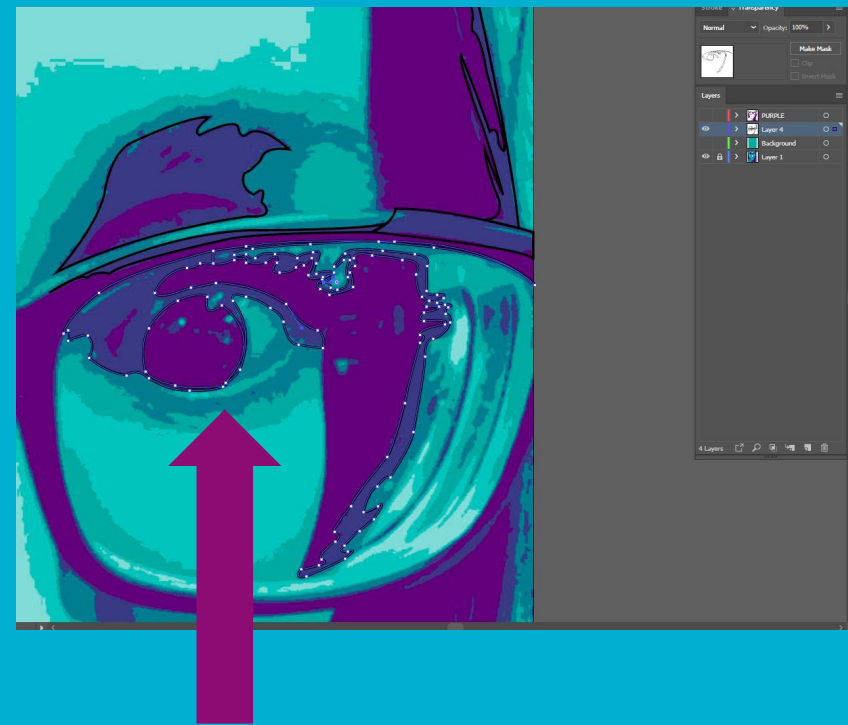
Step 3: Adjusting Layers

- As you are working on pen tooling the shapes, you may need to rearrange your layers
 - This may or may not need to be adjusted, depending on your portrait and the shapes you outlined
- When you have all of your workable layers (NOT your reference photo layer) the portrait should be recognizable with little to no gaps between the colors you pen tooled



Step 4: Editing the Pen Tool

- If you have a lot of gaps between the shapes that you outlined, click on your OPEN ARROW TOOL
 - This is your editing tool
- With your OPEN ARROW TOOL, click on the shape you want to edit
 - Remember, the layer needs to be unlocked
 - Click on the anchor once
 - Use the arrow keys to move the anchor point accordingly
 - Continue this process until the gaps are filled



- CLICK ON THE ANCHORS ONCE
- USE THE ARROW KEYS TO MOVE THEM SO THEY ARE FLUSHED WITH THE OTHER SHAPE OUTLINED
- DO THIS FOR ALL ANCHORS THAT NEED ADJUSTING

Step 5: Choosing a Background Color

- The last step is to choose a background color that suits the missing pieces of your portrait
 - You can use the eyedropper tool from your reference photo to select one of the colors you did not outline
 - If this color does not work for you, you can always make further adjustments in your color swatches



Step 6: COMPLETION!!

- Go back to all of your workable layers and be sure everything has a fill and you turned off your stroke (outline)
- Have all layers turned on besides your reference photo and make sure you have a portrait you are happy with
- Once you are done, save your work twice to your H Drive
 - FILE
 - SAVE AS
 - AI Document
 - FILE
 - EXPORT
 - EXPORT AS
 - JPEG

