

# Do Now # 11

FIMA

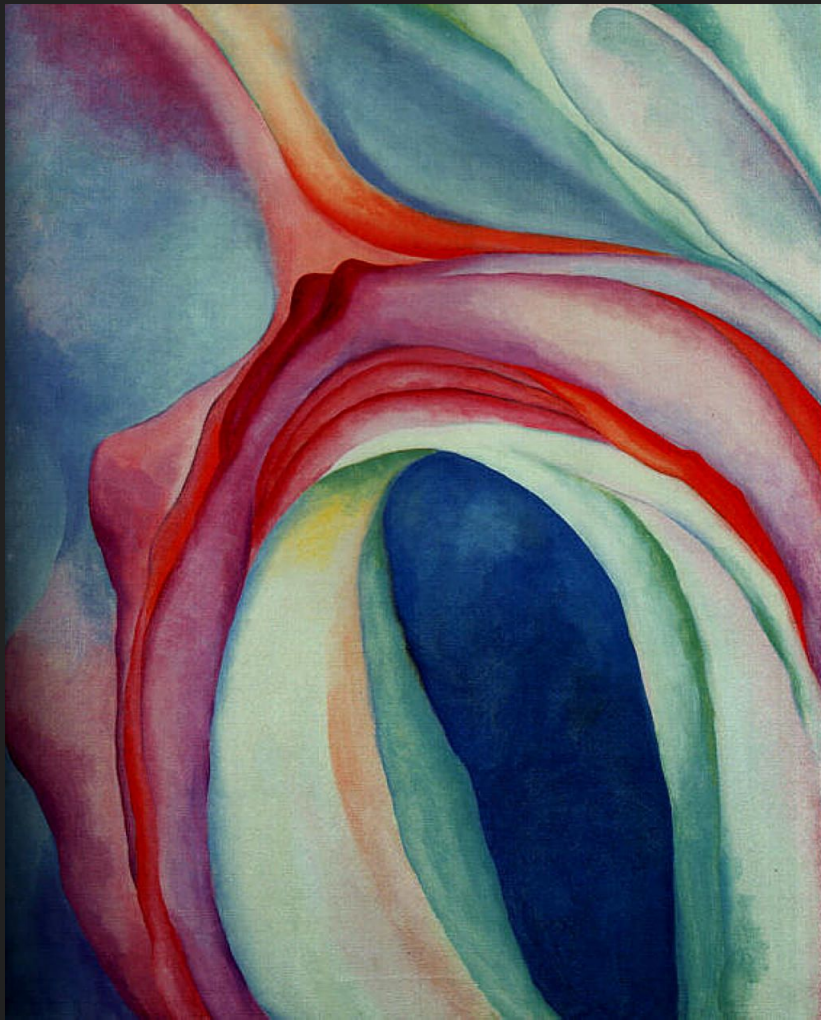
Mrs. Mendola

# Georgia O'Keeffe

- 20th Century American Painter
- Known for her paintings of flowers, skulls, NY Skyscrapers, and landscapes
  - Experimented with her paintings to make something realistic appear abstract

"If I could paint the flower exactly as I see it no one would see what I see because I would paint it small like the flower is small," O'Keeffe explained. "So I said to myself - I'll paint what I see - what the flower is to me but I'll paint it big and they will be surprised into taking time to look at it - I will make even busy New Yorkers take time to see what I see of flowers."

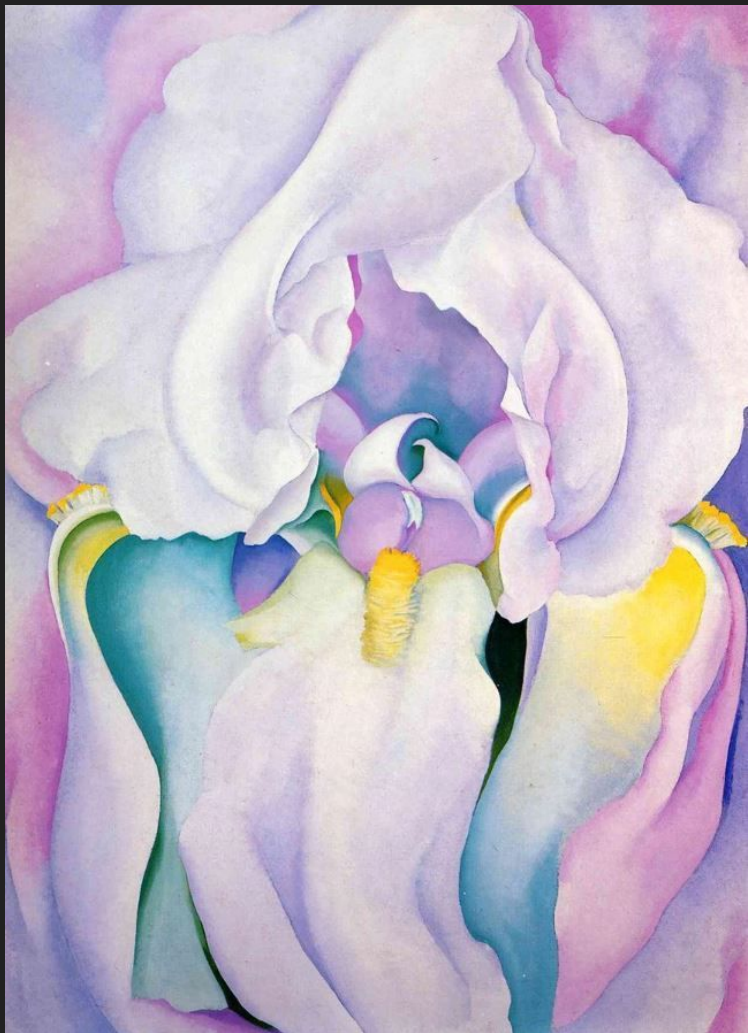
- Georgia O'Keeffe



1. What is this painting of?
  - a. Is this an abstract painting or realistic painting? Explain.
2. What do you notice about the colors and the form?

**\*\*Your answer should be typed in 2 or more complete sentences to receive full credit!**

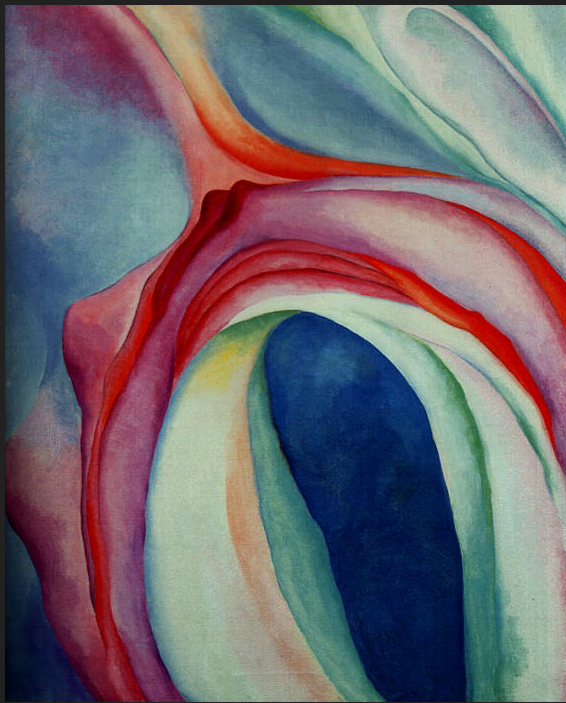
Music Pink and Blue II  
1918



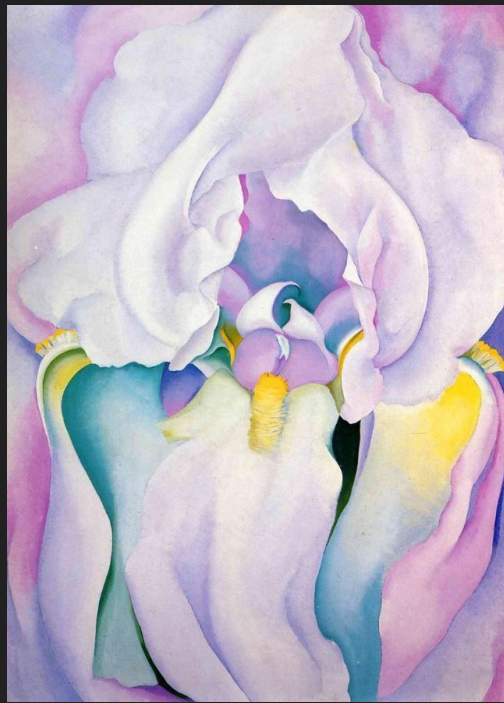
2. What is this painting of?
  - a. Is this an abstract painting or realistic painting? Explain.
3. What do you notice about the colors and the form?

**\*\*Your answer should be typed in 2 or more complete sentences to receive full credit!**

Light of Iris  
1924



Music Pink and Blue II  
1918



Light of Iris  
1924

4. Of these 2 paintings, which do you find more interesting? WHY?

5. Of these 2 paintings, which do you find to be more successful? WHY?

\*Each answer should be typed in 2 or more complete sentences explaining your thoughts in order to receive full credit!

All types of artists crop, or cut-out, parts of their work.

6. Why do you think it is important for artists to crop particular parts of their art work? What is the purpose of cropping?

