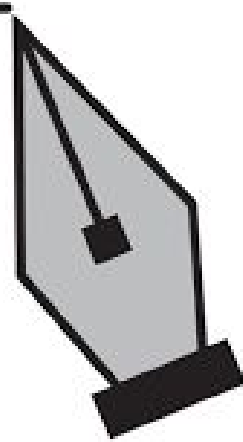


Learn the Pen Tool

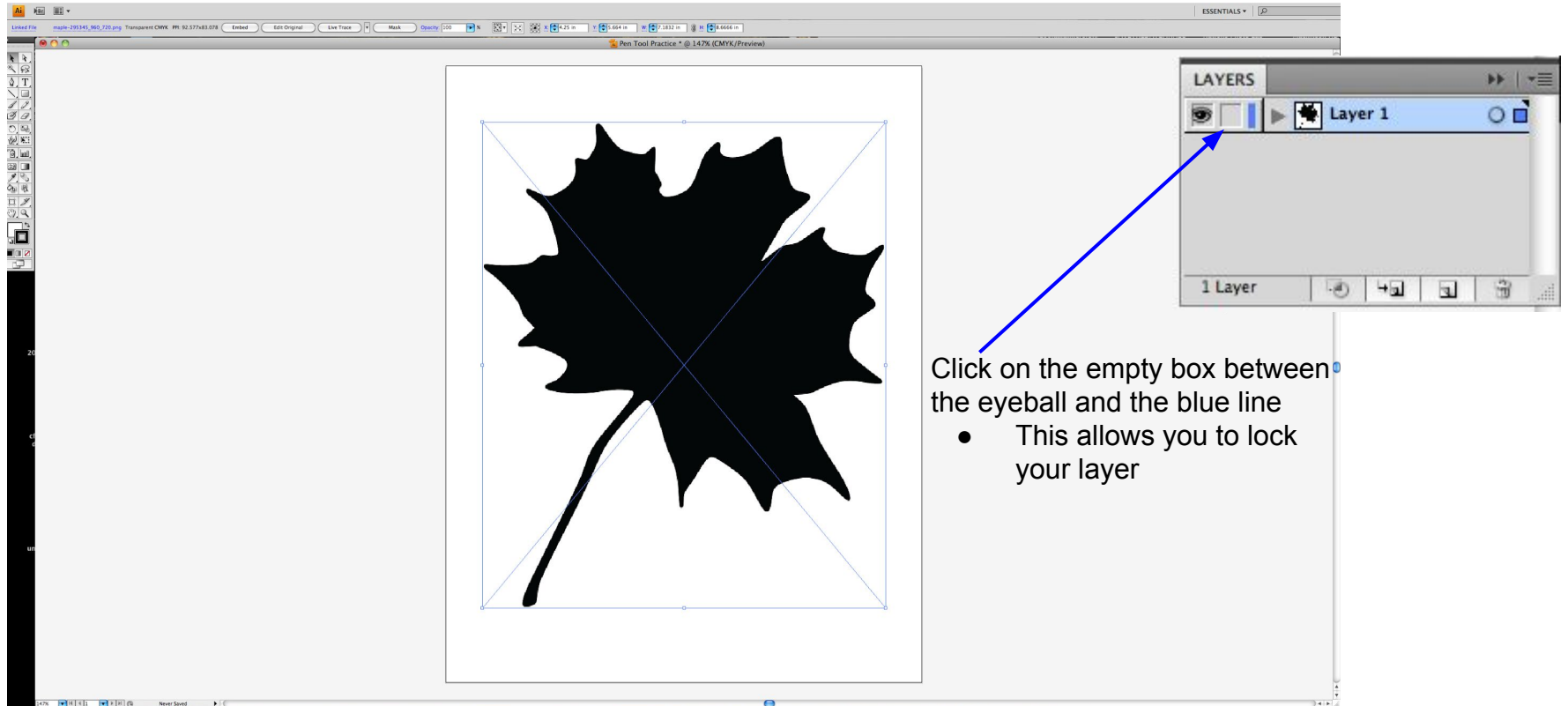
In Adobe
Illustrator CC



FIMA

Mrs. Mendola

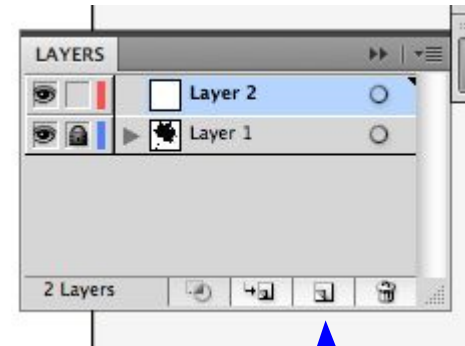
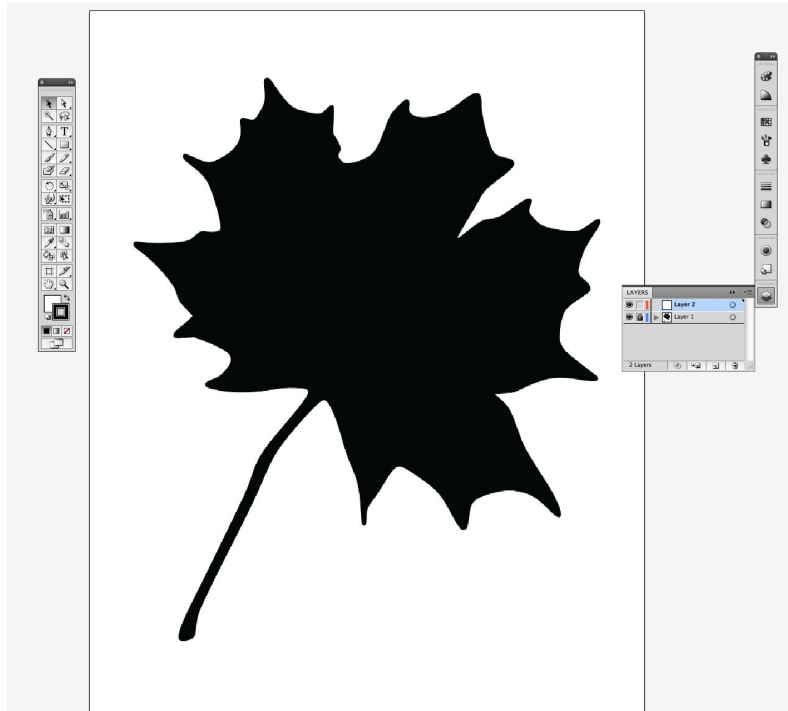
- Open Adobe Illustrator and open a new document; 8.5" X 11"
- Copy & Paste any of the silhouette pictures provided
 - You may need to resize the photo to fit on your artboard



Click on the empty box between the eyeball and the blue line

- This allows you to lock your layer

- After you locked your layer, at the bottom of your layers palette, select the 2nd tool from the right.
 - It looks like a paper with the corner folder up.
 - This allows you to create a new layer



Create a new layer

- On the right side of your screen, you will have your tool palette
- Select the PenTool (3rd tool from the top)



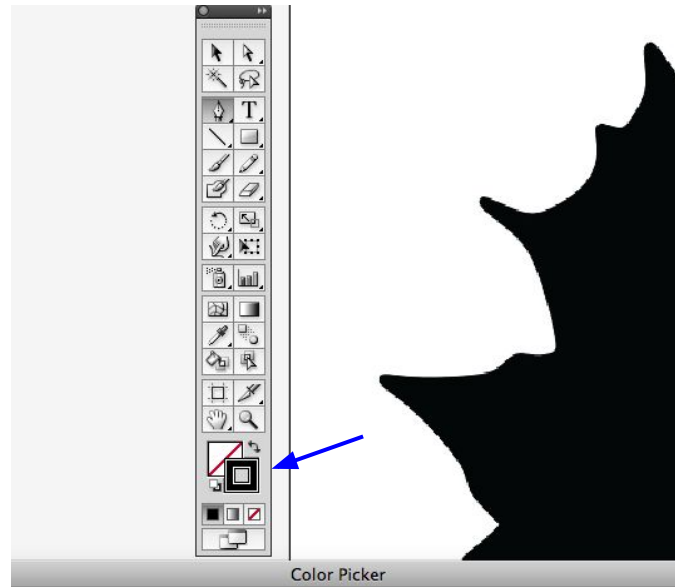
- Towards the bottom you will see 2 squares
 - The solid square is your FILL tool
 - This allows you to fill in an object or shape
 - The box with the square inside of it is called your STROKE tool
 - This outlines the contours of an object or shape

These little squares give you additional options:
Color, Gradient, or None

- Select the PenTool

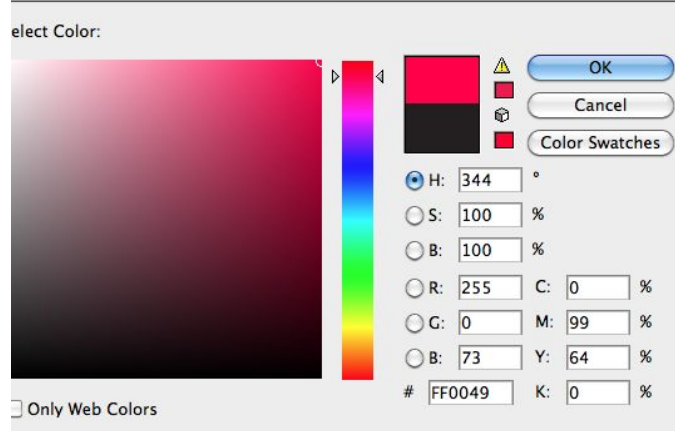


- Click on the FILL square so it is on top of the other box
 - Then select the NONE option



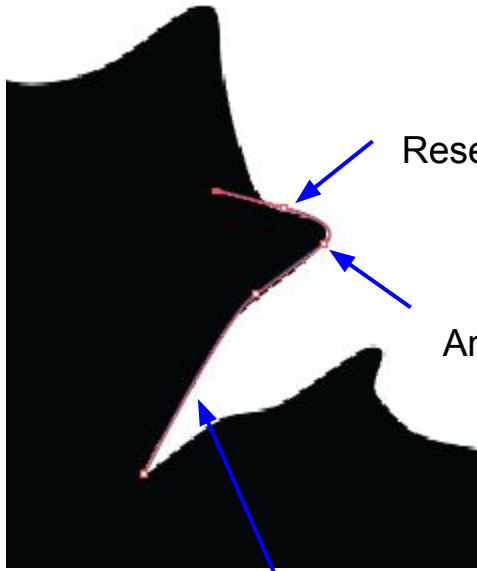
- To change the color of the STROKE, click on the STROKE box so it is in front

Double click on it and select a color of your choice



- Click anywhere you want to begin
 - Corners work best
- A small square will appear, this is called your ANCHOR
- To make a straight line, move to the next point and click again
 - This line is actually called a PATH
- To make a curved line, click and drag until you get the desired curve, & unclick the mouse
 - Click back on your new anchor point, it resets the curve
 - If you do not do this step, you are limited to what type of line you can create**

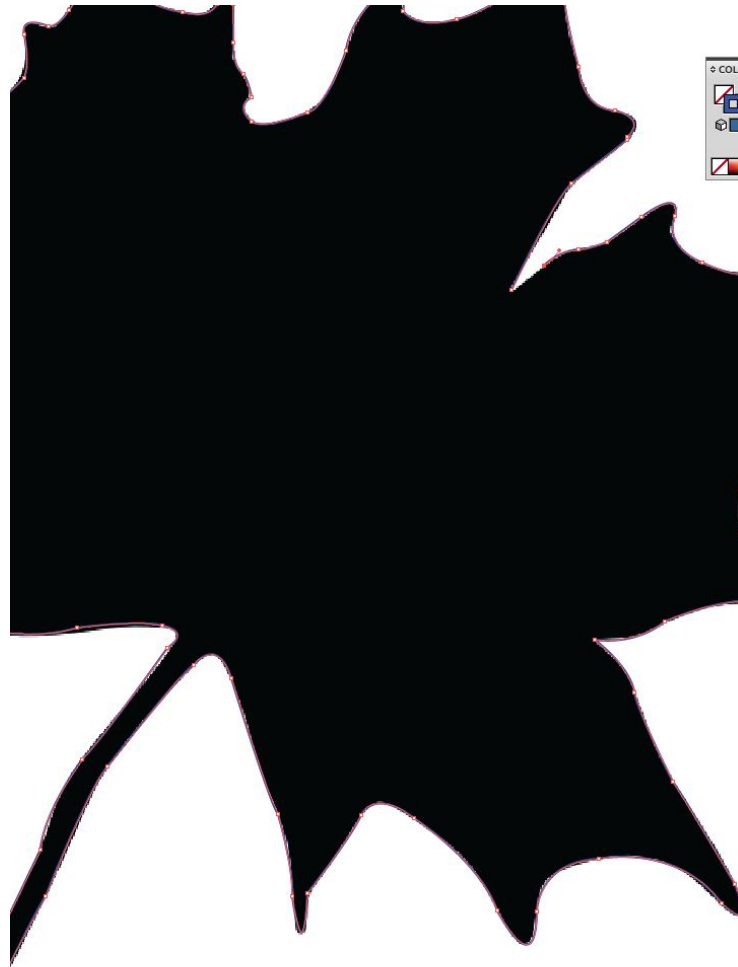
- Remember, you should only see your outline or stroke so be sure you change your color to a bright color!



Resets path

Anchor Points

Stroke/outline



To close your path, you must click on the ORIGINAL, or 1st ANCHOR point that you made

By your PenTool, there will be a small open circle that appears. This means you can close your path

** The symbols that appear next to your PenTool as you are working, are *extremely* important!

- Once you've closed your path by clicking on your original point, click on the DIRECT SELECTION TOOL (white/open cursor) at the top of your tool palette

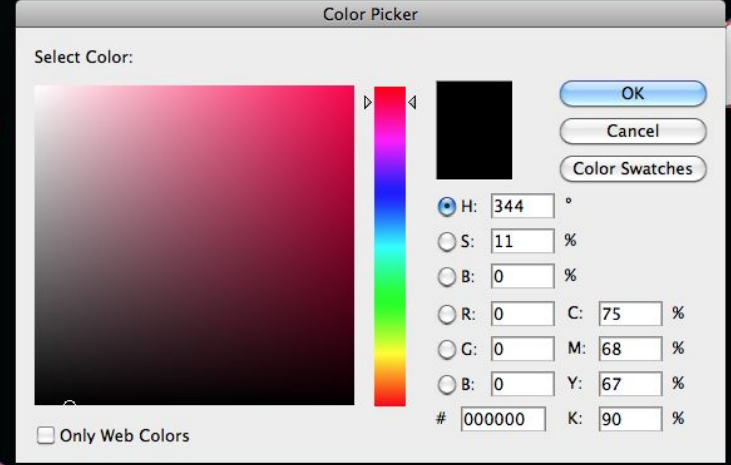
This selects your entire path



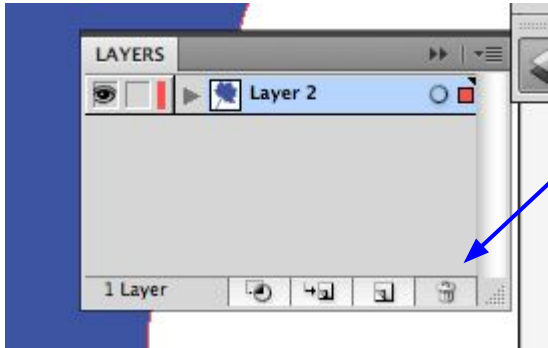
Double click on the FILL box and select whatever color you want your object to be

OR

Click on the curved arrow and this will switch your box options



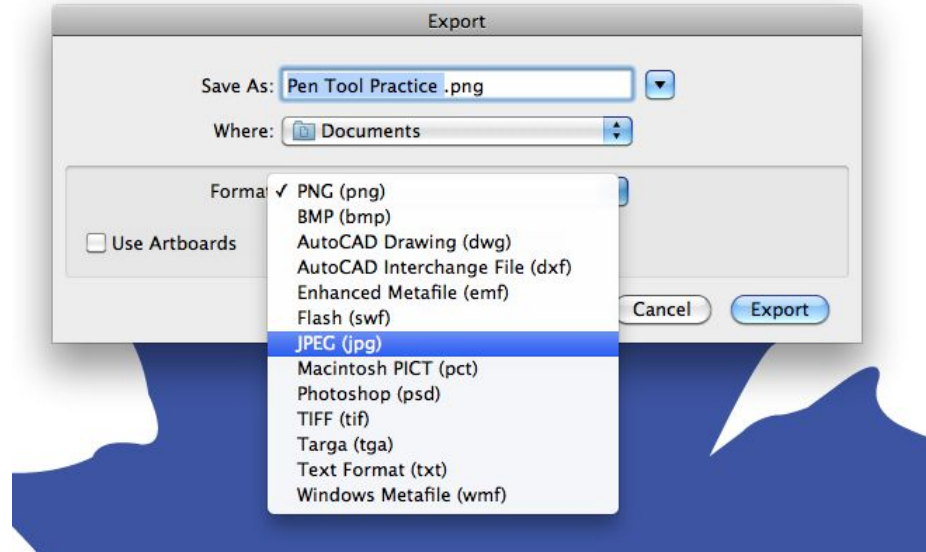
- Go back to your layers palette and delete layer #1
 - Click on layer #1 so it is highlighted
 - Click & drag the layer into the trash can



Now you should only have your drawing and not the original silhouette

Exporting Your Work

- File > Export > Export As > JPEG
- Add this into your Digital Portfolio on Google for grading



- Your final image will be simple but will be graded for effort

CONGRATULATIONS!

You've completed the first PenTool assignment!

