

Surrealism

MRS. MENDOLA

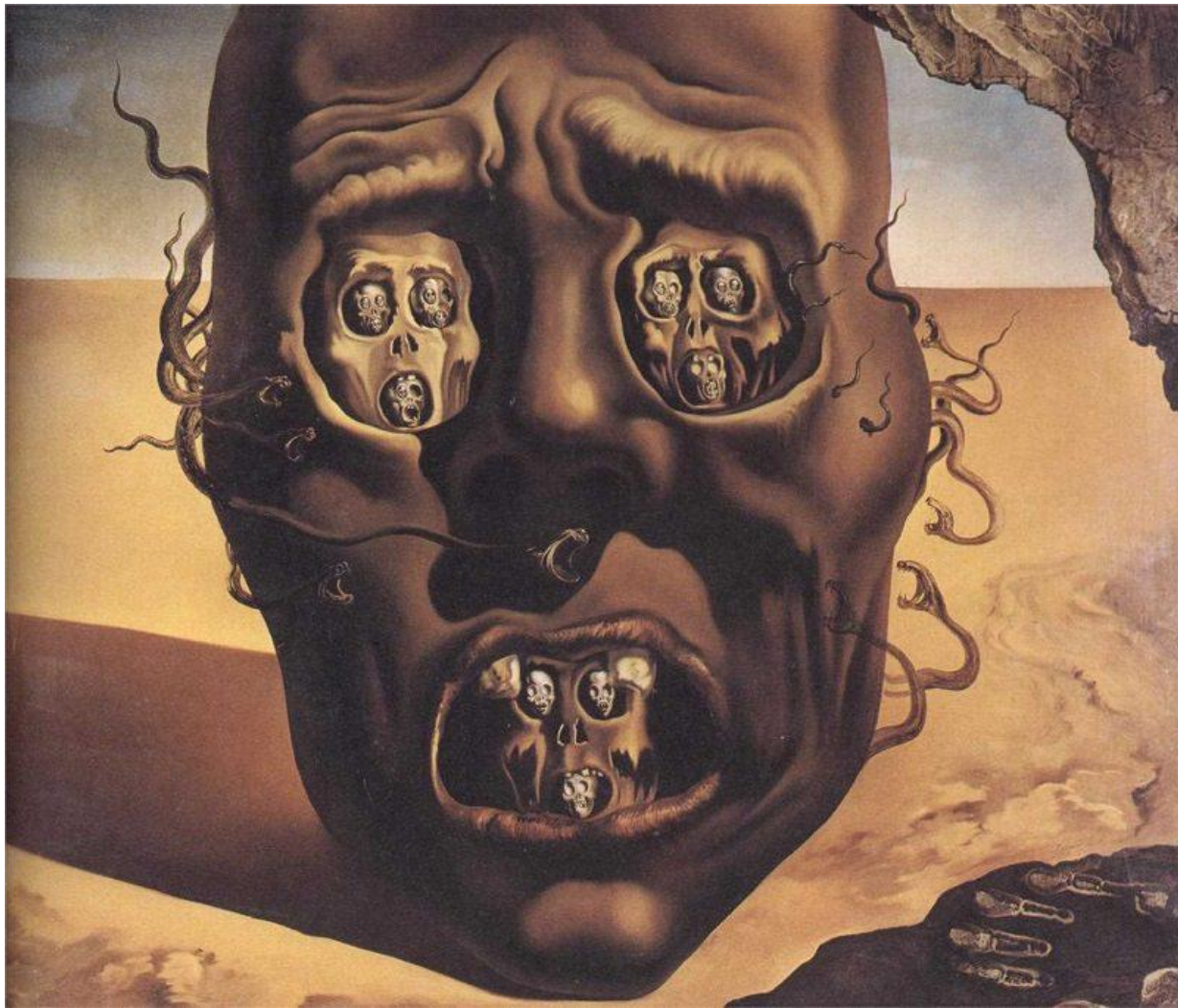
The background is a solid teal color. On the left, the word "Surrealism" is written in a large, bold, white, sans-serif font. On the right side, there are several abstract geometric elements: a large, semi-transparent teal circle with a smaller teal circle inside it, both containing a white wedge-shaped segment; several smaller teal circles of varying sizes, also containing white wedge-shaped segments; and a vertical bar chart in the bottom right corner with four bars of increasing height from left to right, each with a rounded top and a semi-transparent teal fill.



In your own words, describe surrealism.

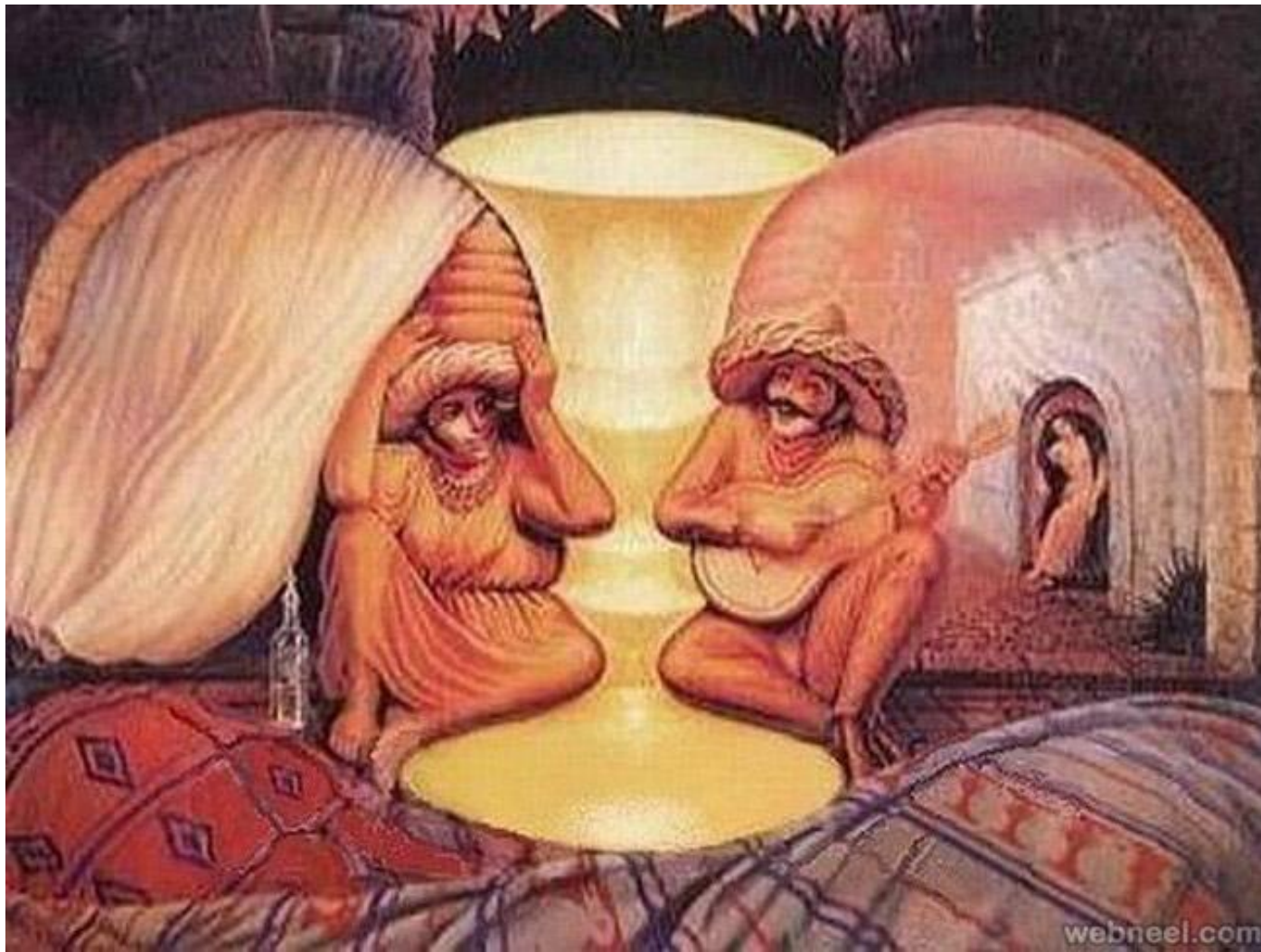
Where might you “see” something surreal?

Are artists today influenced by the Surrealist movement?



What do you see in this painting?

How does it make you feel? Why?



What do you notice in this painting?

List everything you see in this painting.



What is happening in this painting?

Does it relate to today's world? If it does, how so? If it does not, why do you think the artist created this painting?



Go onto Google.com and search surrealist paintings.

Click on images.

Pick ANY image (school appropriate) that we have not seen/talked about.

Tell me why you chose this particular image. What stood out to you. What do you like the most about it? Etc.